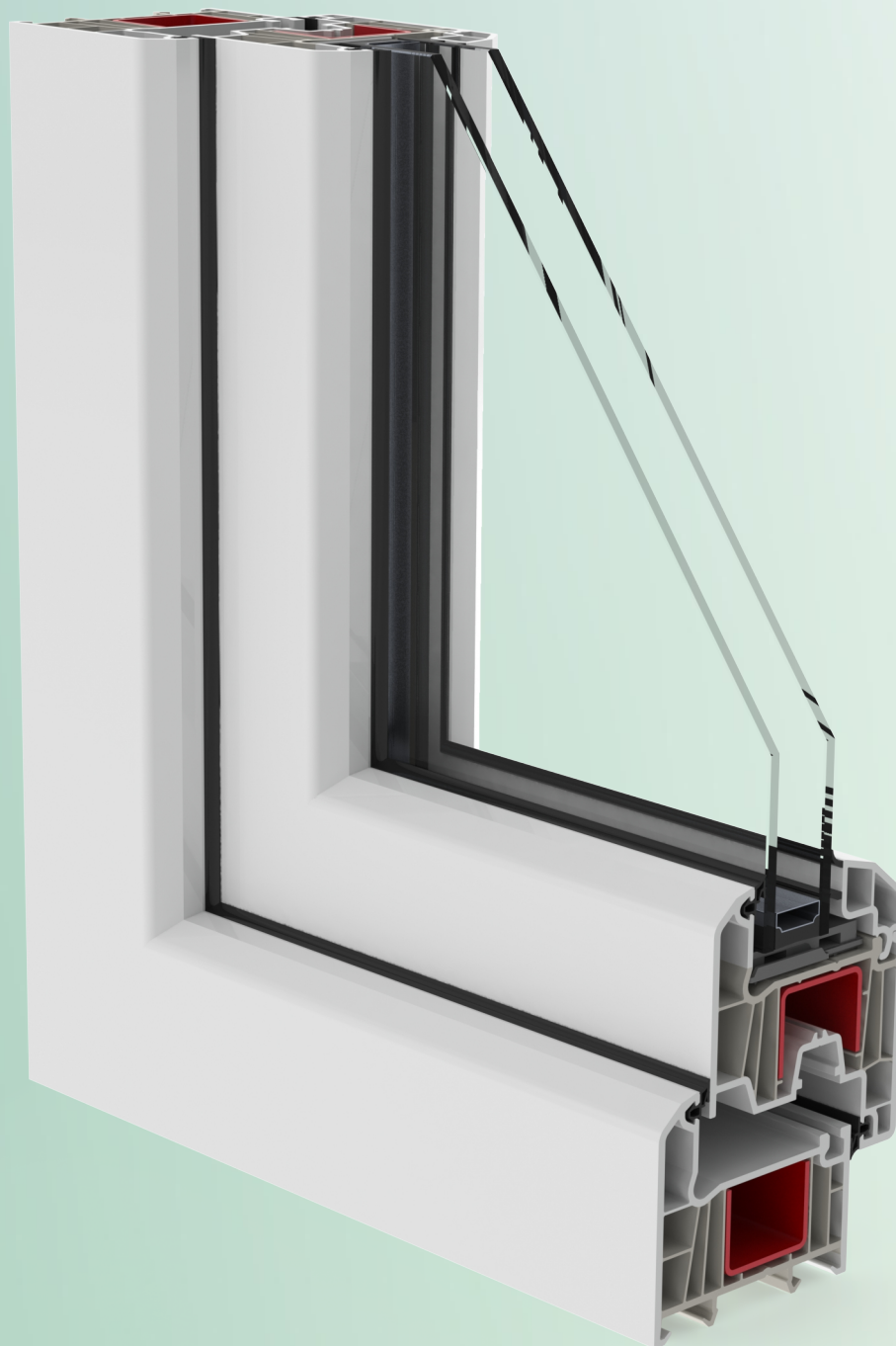
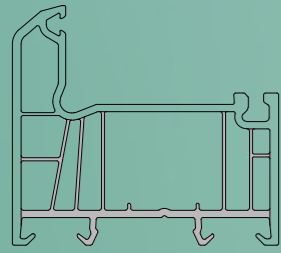


# Cap.2 Komponente sistem

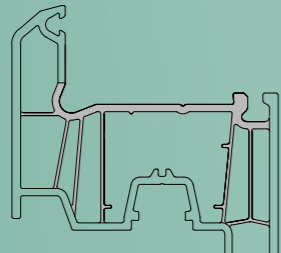


Cap.2 Sistem

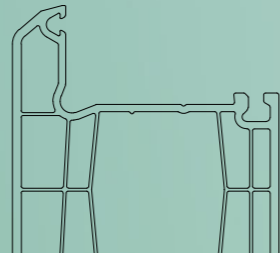
Profile



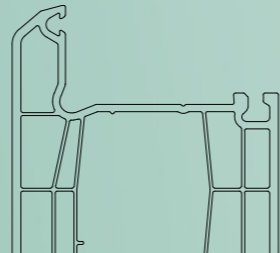
Profil rama  
**S.70101**



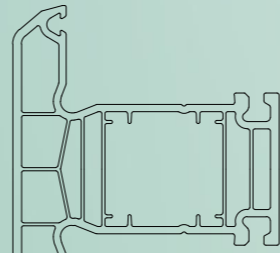
Profil cerceva  
**S.70201**



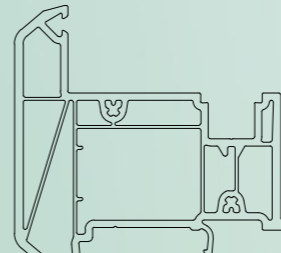
Profil cerceva ușă deschidere interioară  
**S.70202**



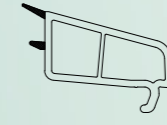
Profil cerceva ușă deschidere exterioră  
**S.70203**



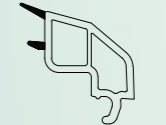
Profil montant  
**S.70301**



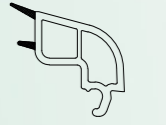
Profil montant mobil  
**S.70401**



Profil baghetă  
**305-02**



Profil baghetă  
**605-01**



Profil baghetă  
**605-04**



Profil baghetă  
**605-06**



Profil baghetă  
**605-02**



Profil baghetă  
**605-03**



Profil baghetă  
**605-05**



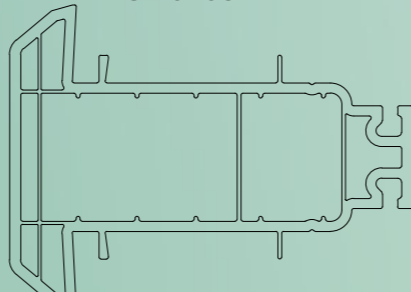
Profil cuplare  
**306-01**



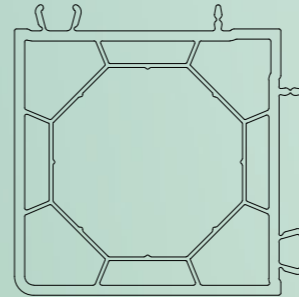
Profil cuplare  
**606-01**



Profil cuplare  
**206-02**



Profil cuplare statică  
**606-06**



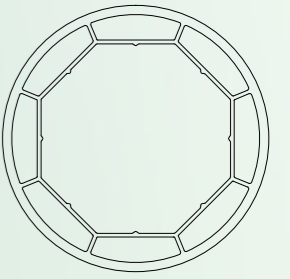
Profil cuplare 90°  
**606-05**



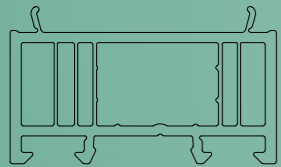
Profil adaptor teava  
**306-04**



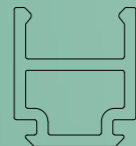
Profil adaptor teava  
**606-04**



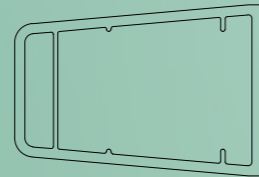
Profil teava  
**606-03**



Profil adăugare ramă  
**607-01**



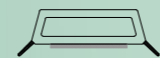
Profil conector zid  
**207-02**



Profil rigidizare montant  
**607-02**



Profil picurător  
**607-03**



Profil baghetă ornamentală autoadezivă  
**607-04**

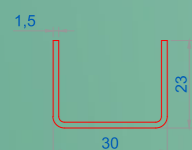


Profil capac  
**607-05**

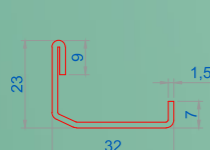


Profil pervaz  
**607-06**

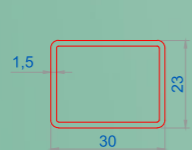
Armături



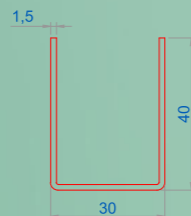
Armătură  
**109-01**



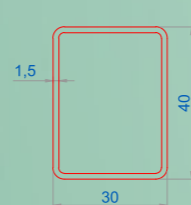
Armătură  
**709-02**



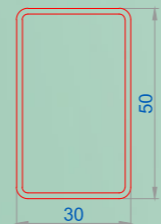
Armătură  
**109-03**



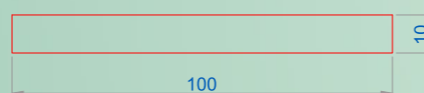
Armătură  
**109-04**



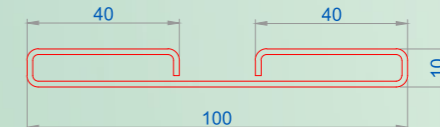
Armătură  
**109-05**



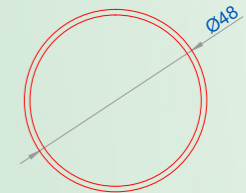
Armătură  
**309-05**



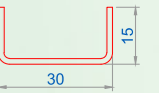
Armătură  
**209-08**



Armătură  
**209-09**

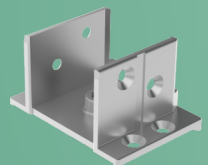


Armătură  
**209-10**



Armătură  
**109-02**

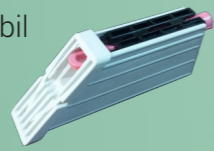
Accesorii



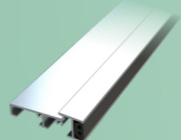
Conector montant - **S.71101**



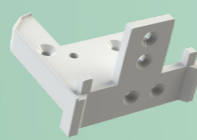
Set capace montant mobil  
**S.71103**



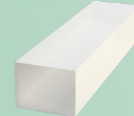
Set piese colt sudabilă - **S.41104**



Prag aluminiu - **614-01**



Set capace prag - **S.71402**



Miez montant înclinat  
**S.41102**



Garnitură geam EPDM  
**310-01**



Garnitură geam EPDM  
**310-03**



Garnitură cercevea EPDM  
**310-02**



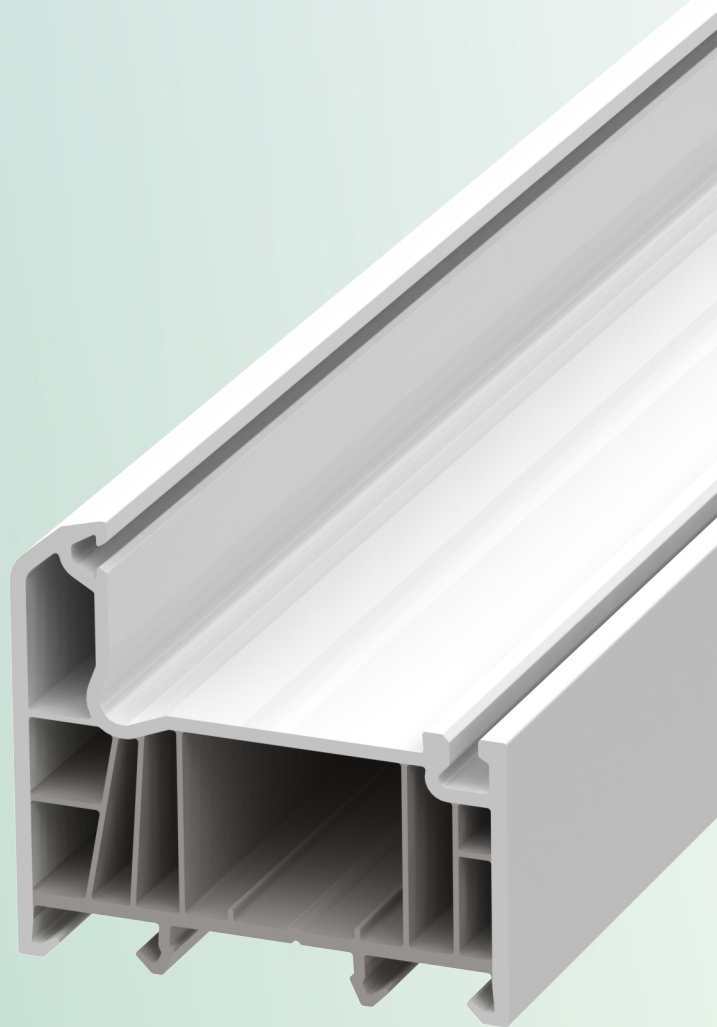
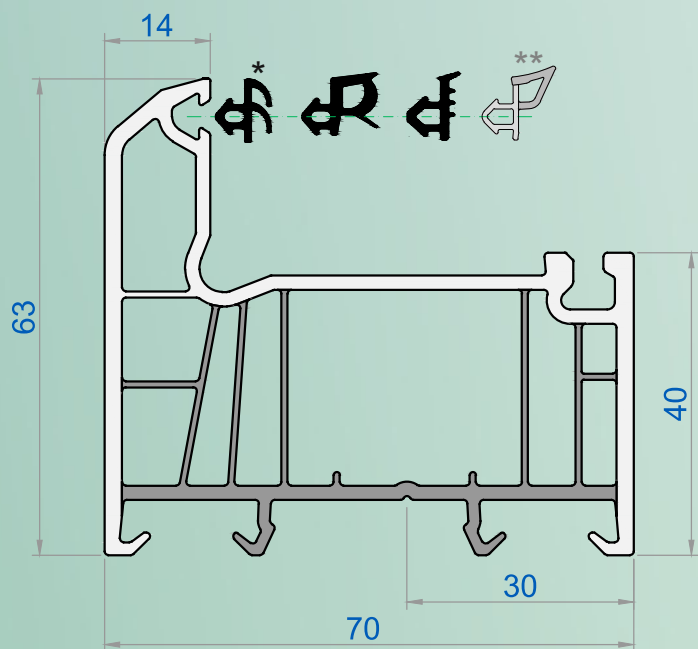
Garnitură geam TPE  
**310-10**



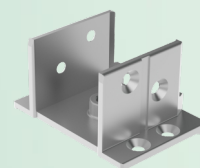
Garnitură cercevea TPE  
**310-20**

Cap.2.1 Profil

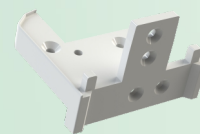
Profil rama - **S.70101**



Accesorii utilizate:



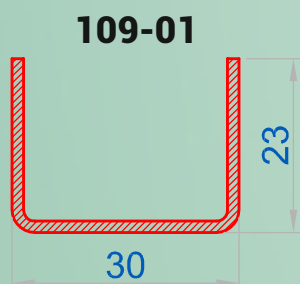
Conector montant - **S.71101**



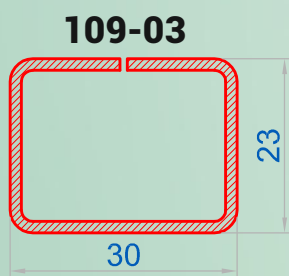
Capac prag - **S.71402**

- \* Garnituri EPDM
- \*\* Garnituri TPE preinstalate

Armături utilizate:



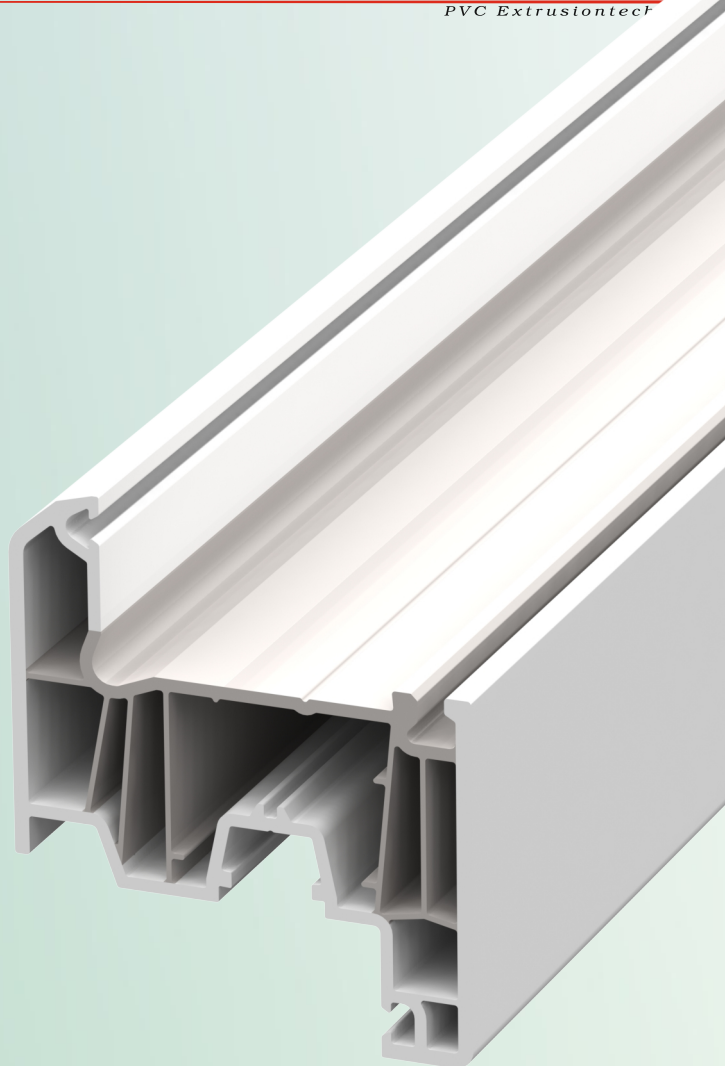
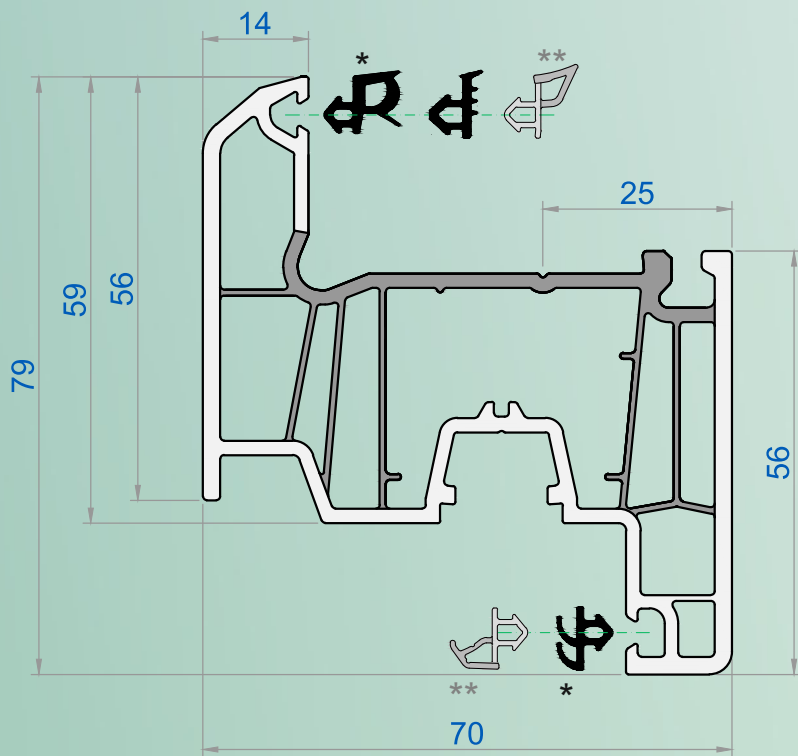
$I_x=0,58\text{cm}^4$   
 $I_y=1,58\text{cm}^4$



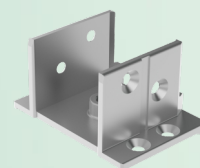
$I_x=1,18\text{cm}^4$   
 $I_y=1,82\text{cm}^4$

Cap.2.1 Profile

Profil cercevea - **S.70201**

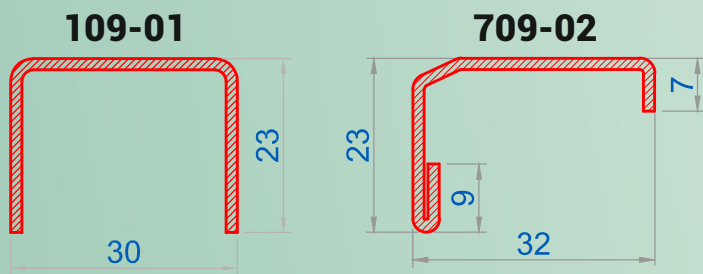


Accesorii utilizate:



Conector montant - **S.71101**

Armături utilizate:

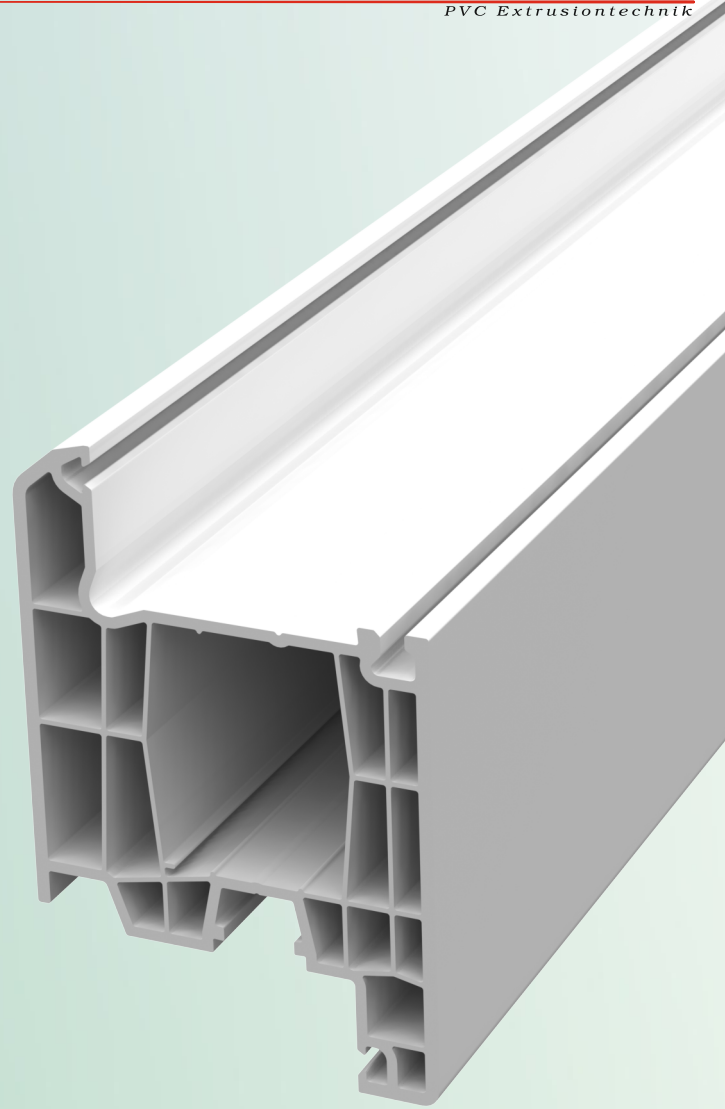
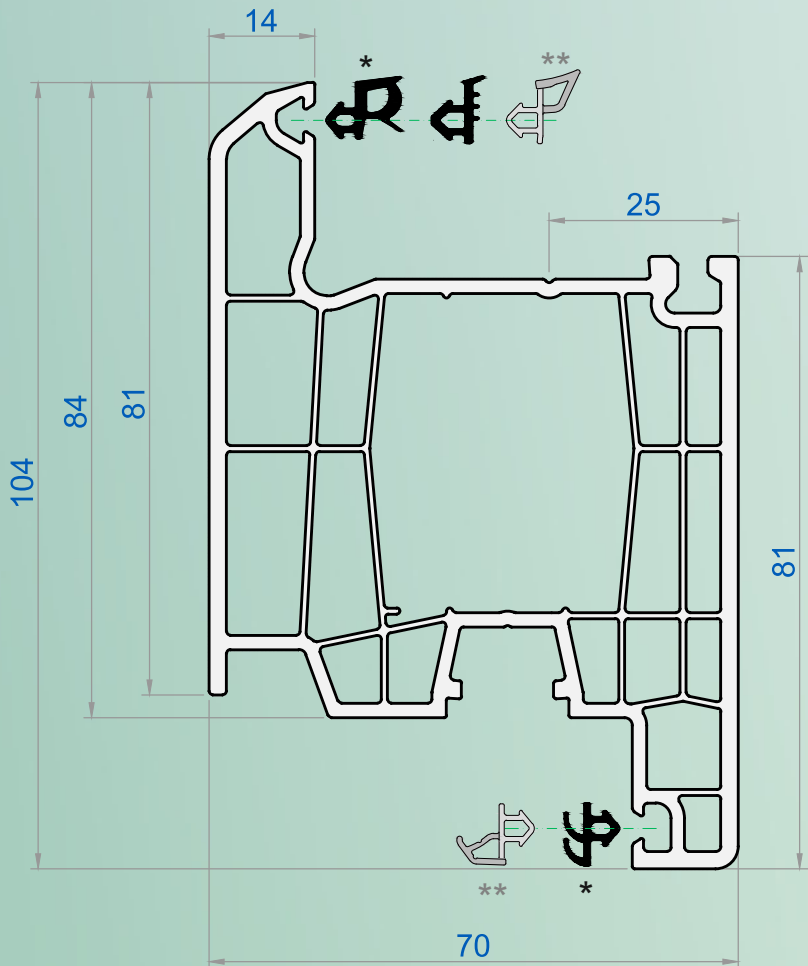


$I_x=0,58\text{cm}^4$   
 $I_y=1,58\text{cm}^4$

$I_x=0,56\text{cm}^4$   
 $I_y=1,22\text{cm}^4$

Cap.2.1 Profil

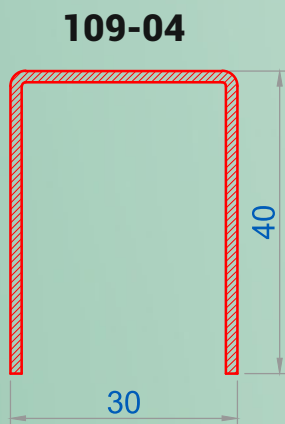
Profil cercevea - **S.70202**



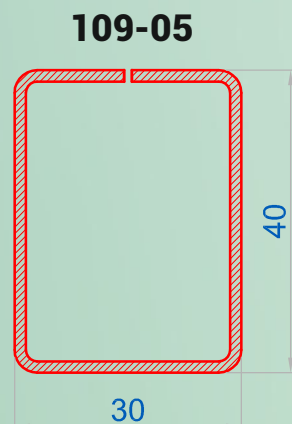
- \* Garnituri EPDM
- \*\* Garnituri TPE preinstalate

Accesorii utilizate:

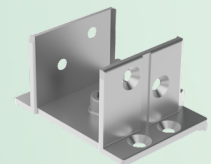
Armături utilizate:



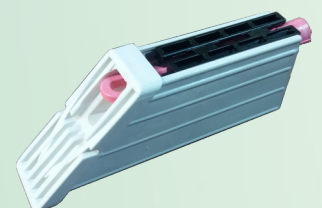
$I_x=2,65\text{cm}^4$   
 $I_y=2,62\text{cm}^4$



$I_x=4,32\text{cm}^4$   
 $I_y=2,81\text{cm}^4$



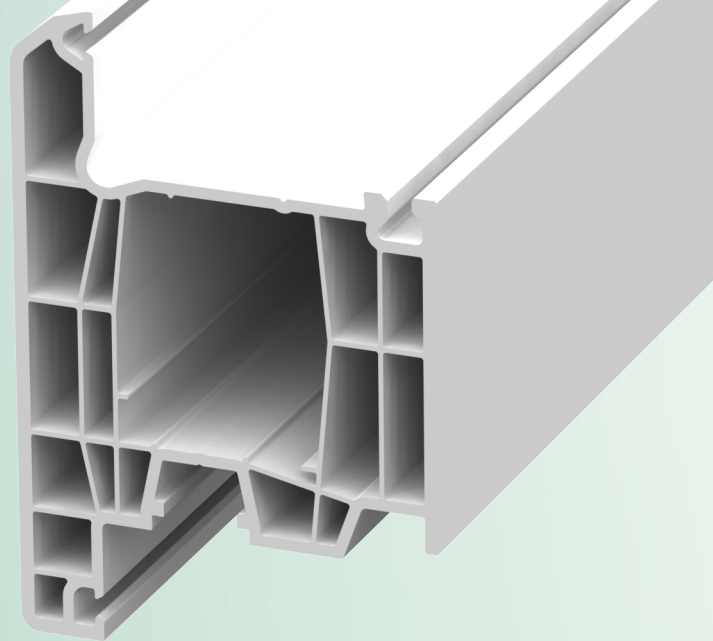
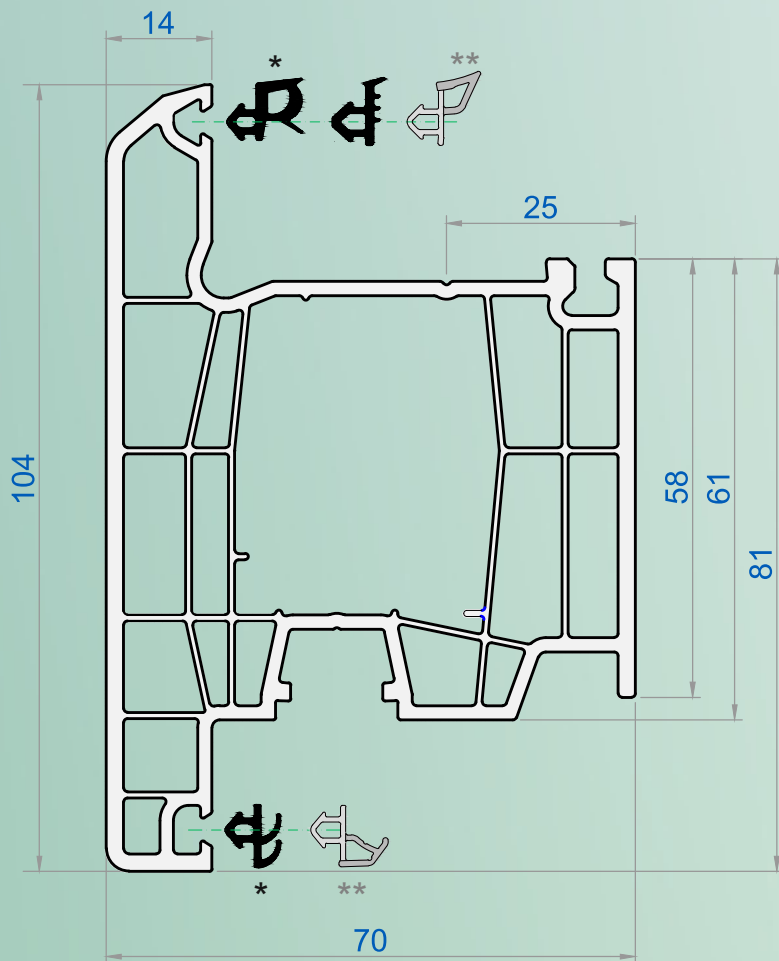
Conector montant - **S.71101**



Set piese colt sudabilă - **S.41104**

Cap.2.1 Profil

Profil cercevea - **S.70203**

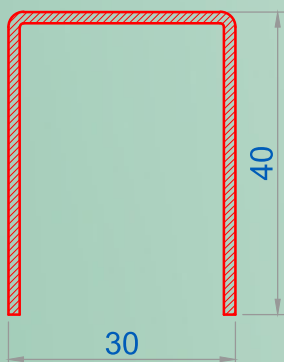


- \* Garnituri EPDM
- \*\* Garnituri TPE preinstalate

Accesorii utilizate:

Armături utilizate:

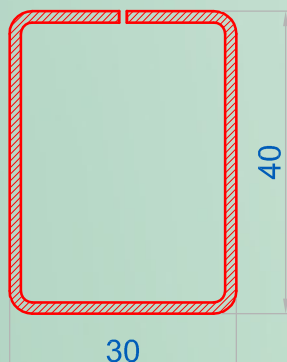
**109-04**



$$I_x = 2,65 \text{ cm}^4$$

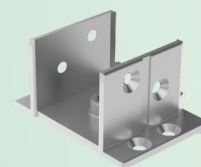
$$I_y = 2,62 \text{ cm}^4$$

**109-05**

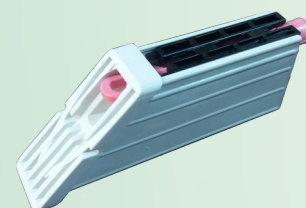


$$I_x = 4,32 \text{ cm}^4$$

$$I_y = 2,81 \text{ cm}^4$$



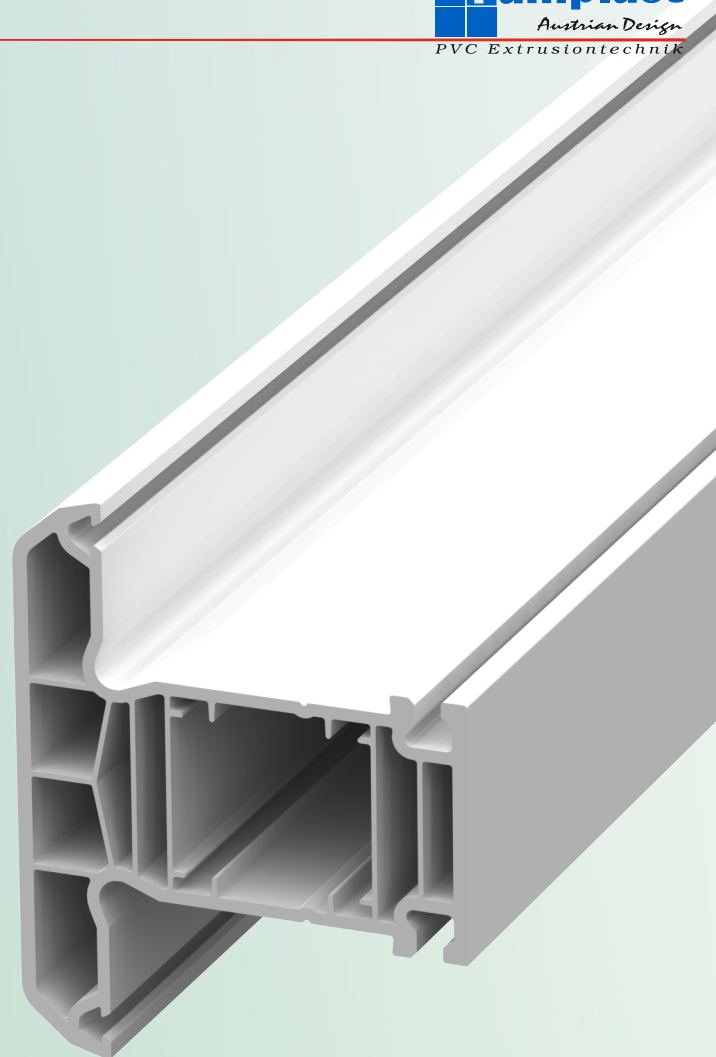
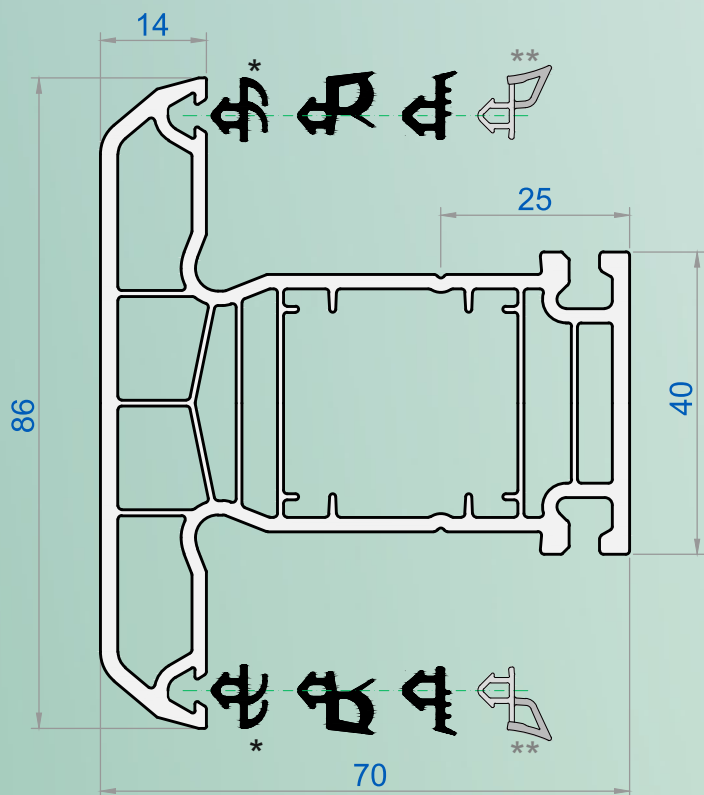
Conector montant - **S.71101**



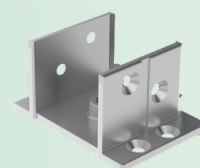
Set piese colt sudabilă - **S.41104**

Cap.2.1 Profil

Profil montant - **S.70301**

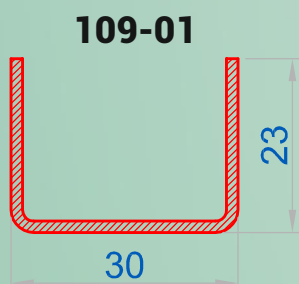


Accesorii utilizate:

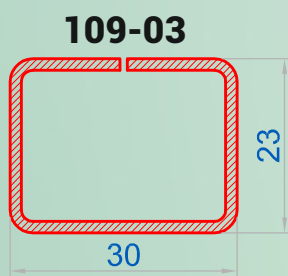


- \* Garnituri EPDM
- \*\* Garnituri TPE preinstalate

Armături utilizate:



$I_x = 0,58 \text{cm}^4$   
 $I_y = 1,58 \text{cm}^4$

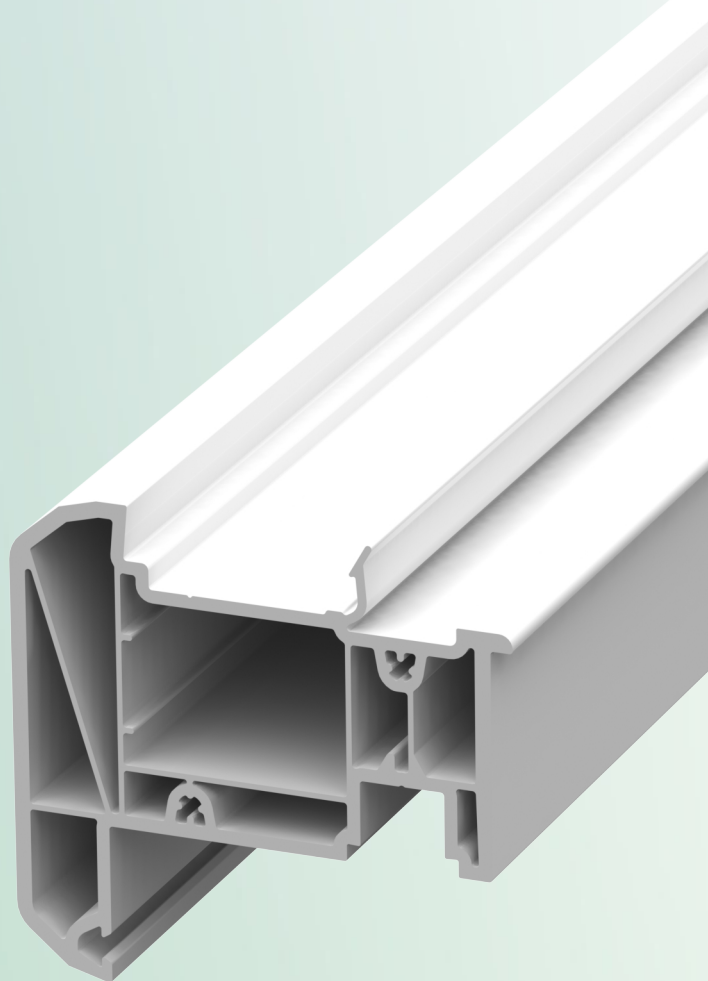
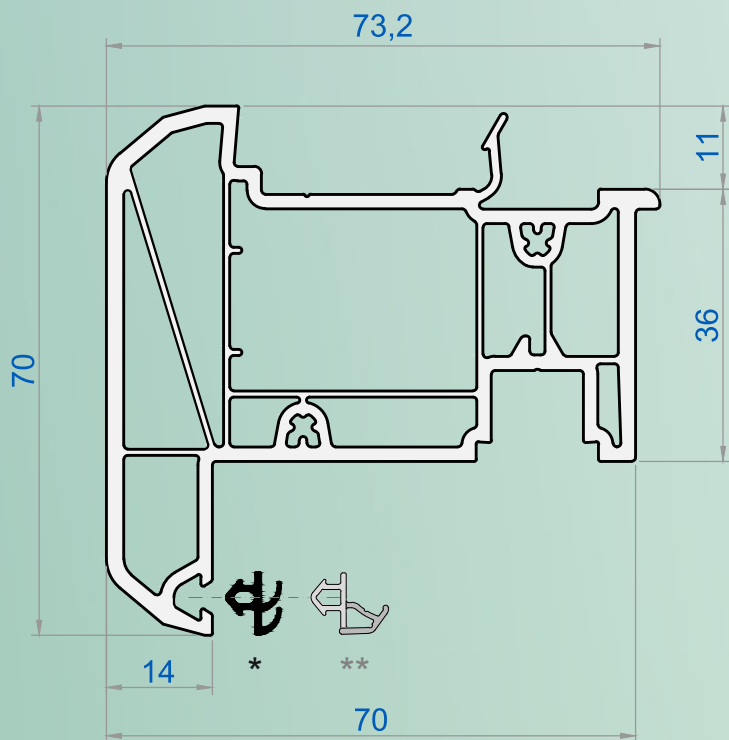


$I_x = 1,18 \text{cm}^4$   
 $I_y = 1,82 \text{cm}^4$

Conector montant - **S.71101**

Cap.2.1 Profil

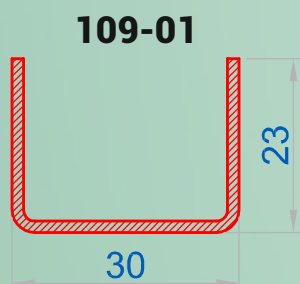
Profil montant - **S.70401**



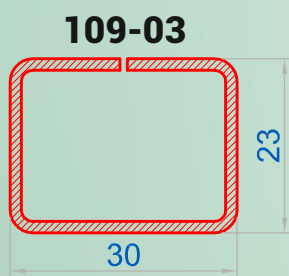
Accesorii utilizate:

- \* Garnituri EPDM
- \*\* Garnituri TPE preinstalate

Armături utilizate:



$I_x = 0,58\text{cm}^4$   
 $I_y = 1,58\text{cm}^4$



$I_x = 1,18\text{cm}^4$   
 $I_y = 1,82\text{cm}^4$

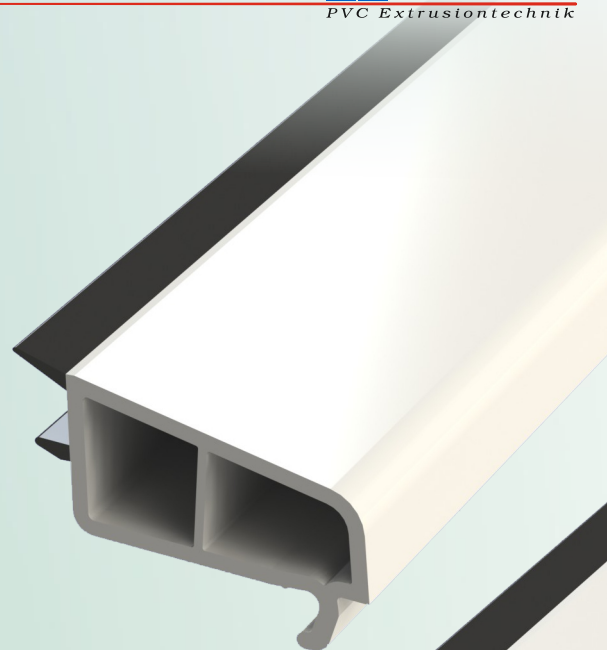
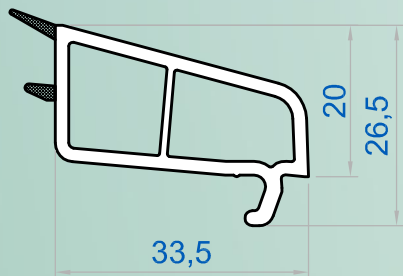


Set capace montant mobil  
**S.71103**

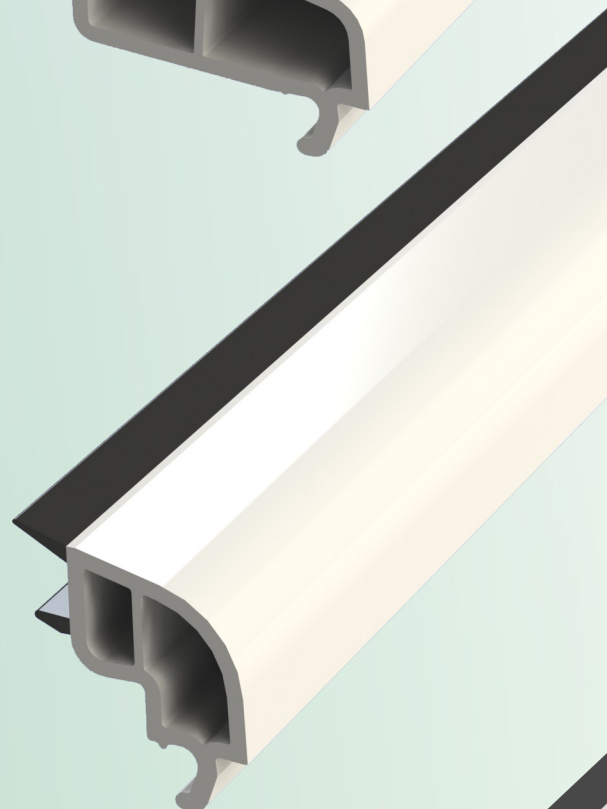
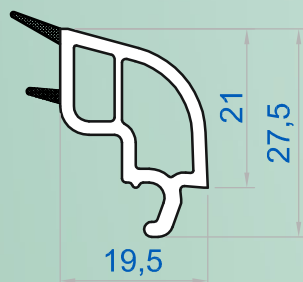


Cap.2.1 Profile

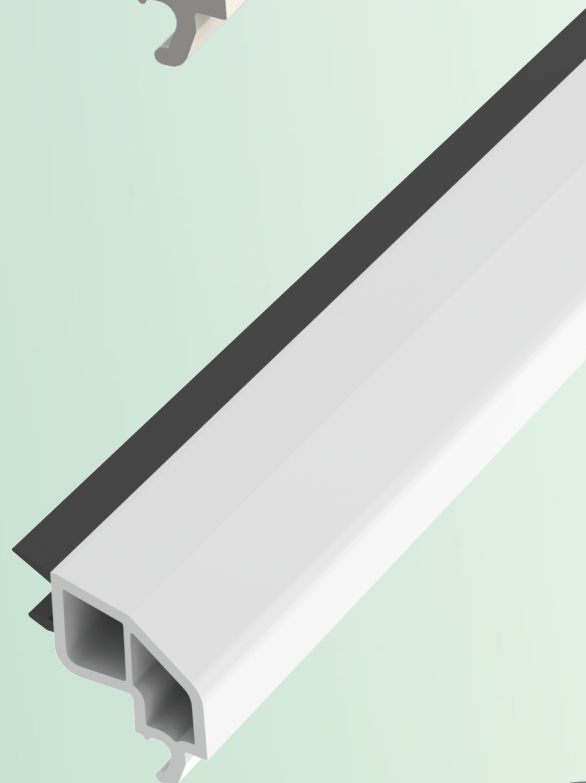
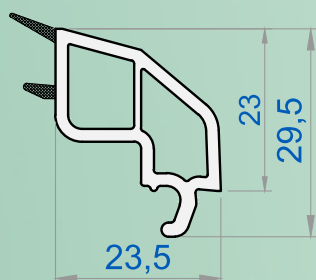
Profil baghetă - **305-02**



Profil baghetă - **605-06**

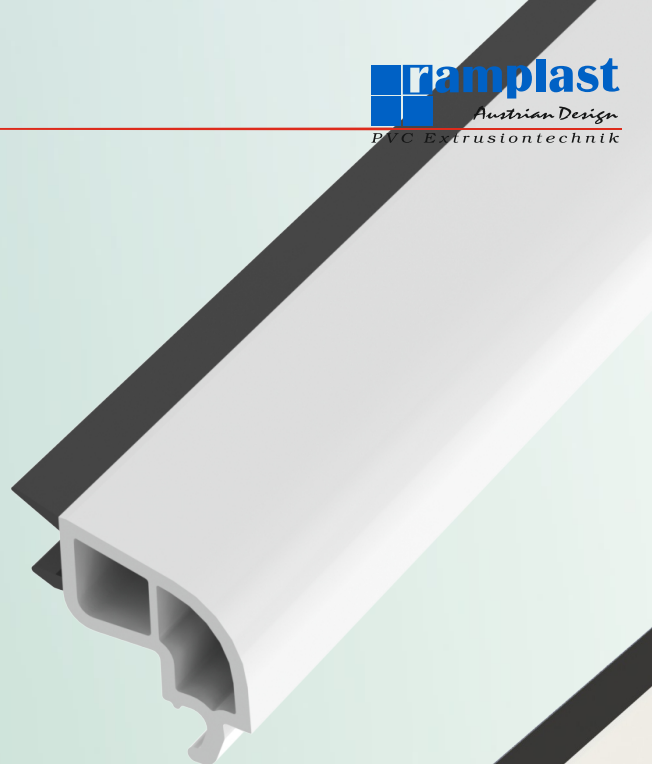
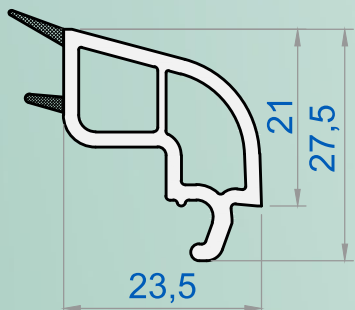


Profil baghetă - **605-01**

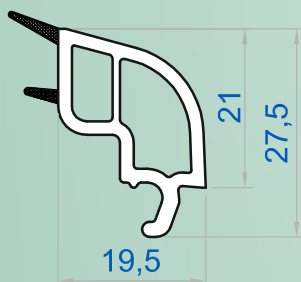


Cap.2.1 Profile

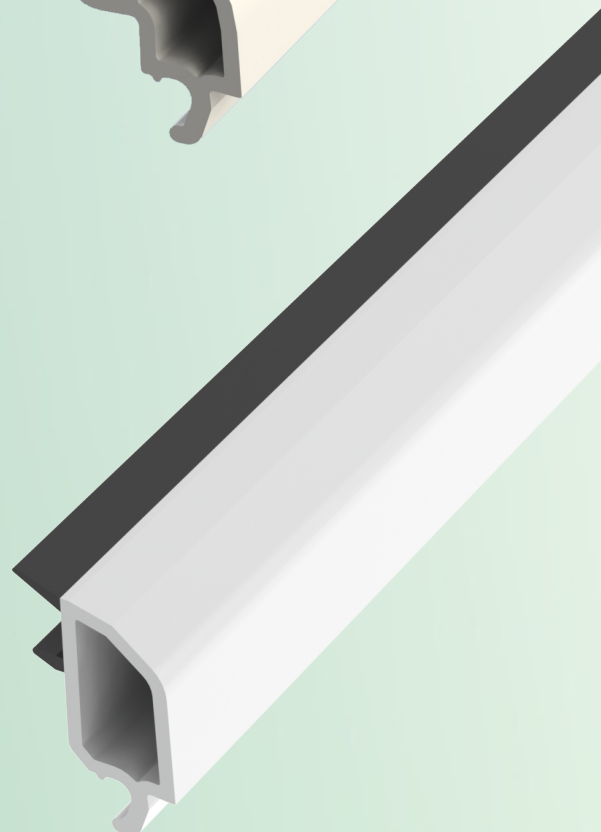
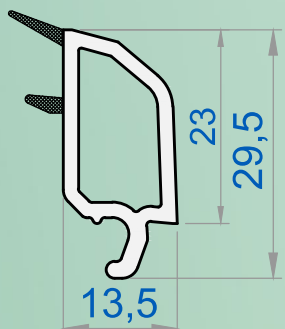
Profil baghetă - **605-04**



Profil baghetă - **605-06**

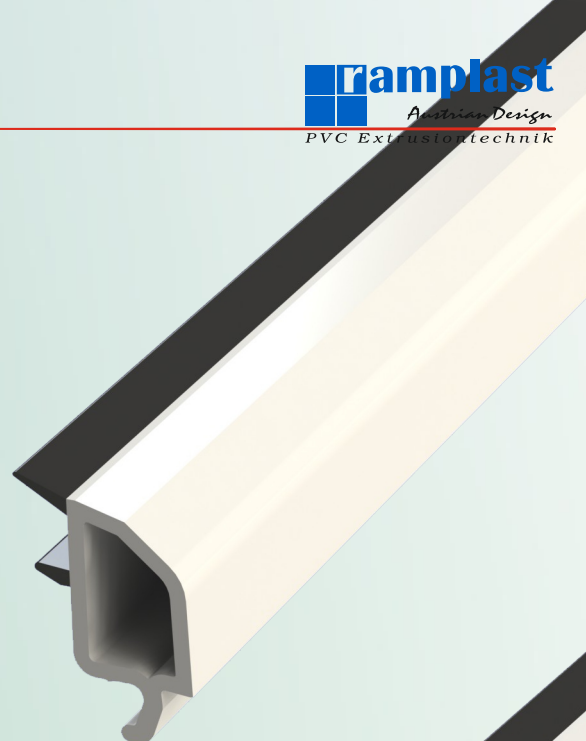
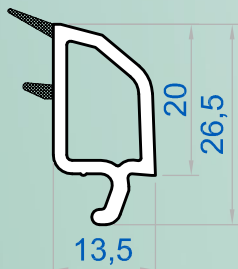


Profil baghetă - **605-02**

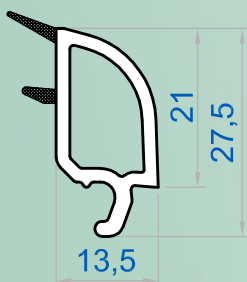


Cap.2.1 Profile

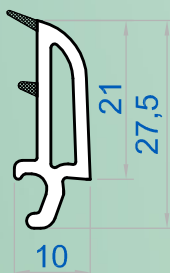
Profil baghetă - **305-01**



Profil baghetă - **605-03**

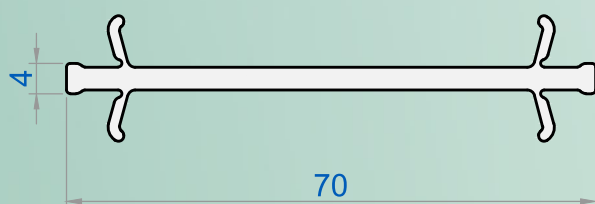


Profil baghetă - **605-05**

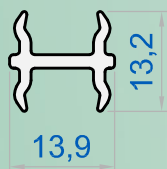


Cap.2.1 Profile

Profil cuplare - **606-01**

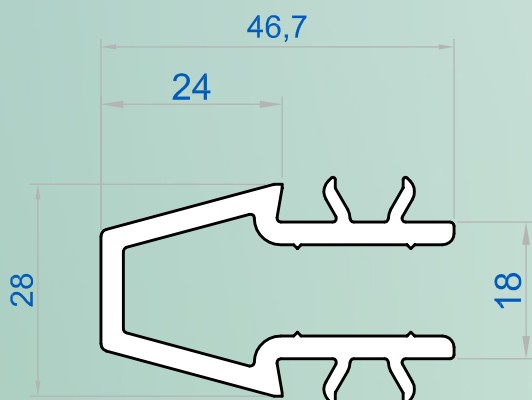


Profil cuplare - **306-01**



Cap.2.1 Profil

Profil cuplare - **206-02**



Armături utilizate:

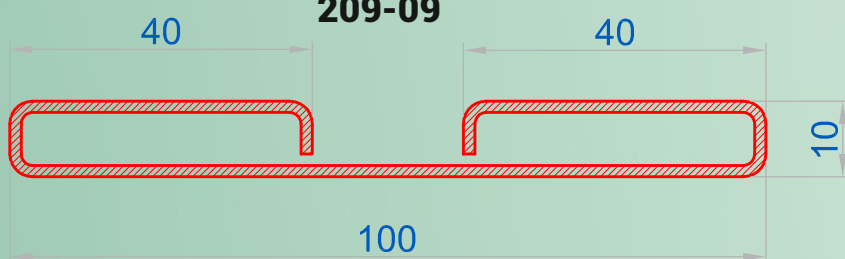
**209-08**



$$I_x = 8,33 \text{ cm}^4$$

$$I_y = 83,33 \text{ cm}^4$$

**209-09**

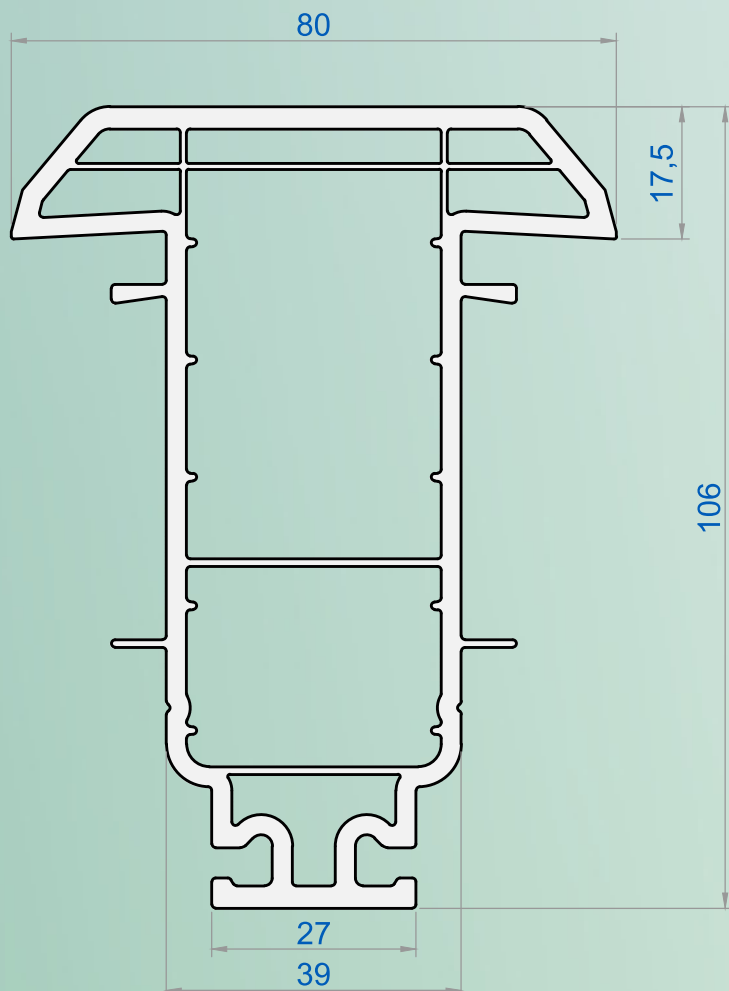


$$I_x = 4,81 \text{ cm}^4$$

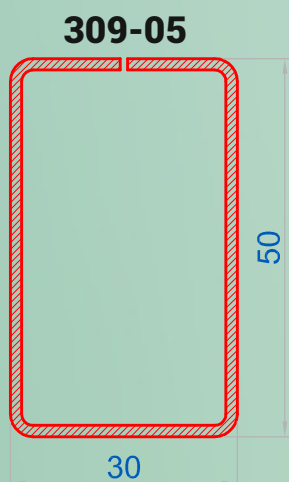
$$I_y = 21,72 \text{ cm}^4$$

Cap.2.1 Profile

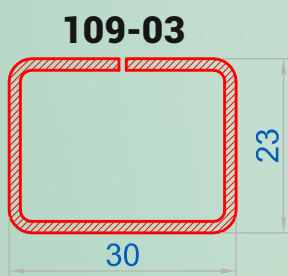
Profil cuplare statică - **606-06**



Armături utilizate:



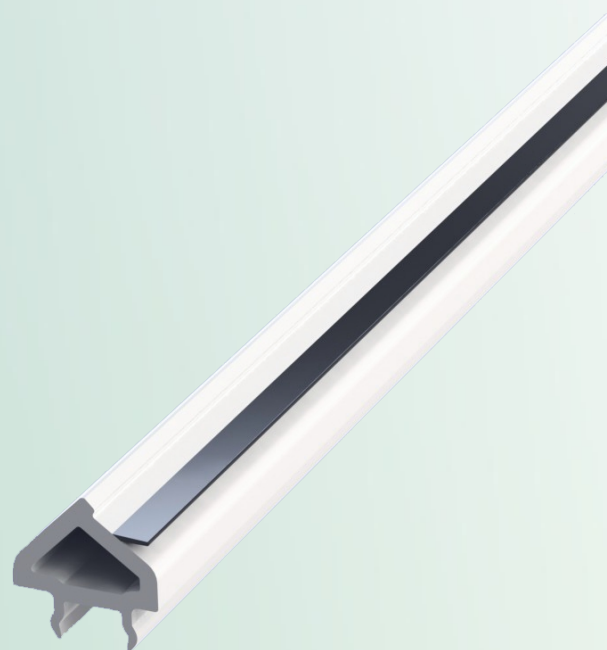
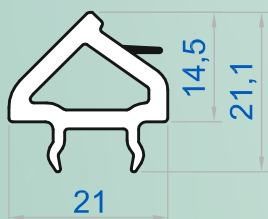
$I_x = 7,44 \text{ cm}^4$   
 $I_y = 3,41 \text{ cm}^4$



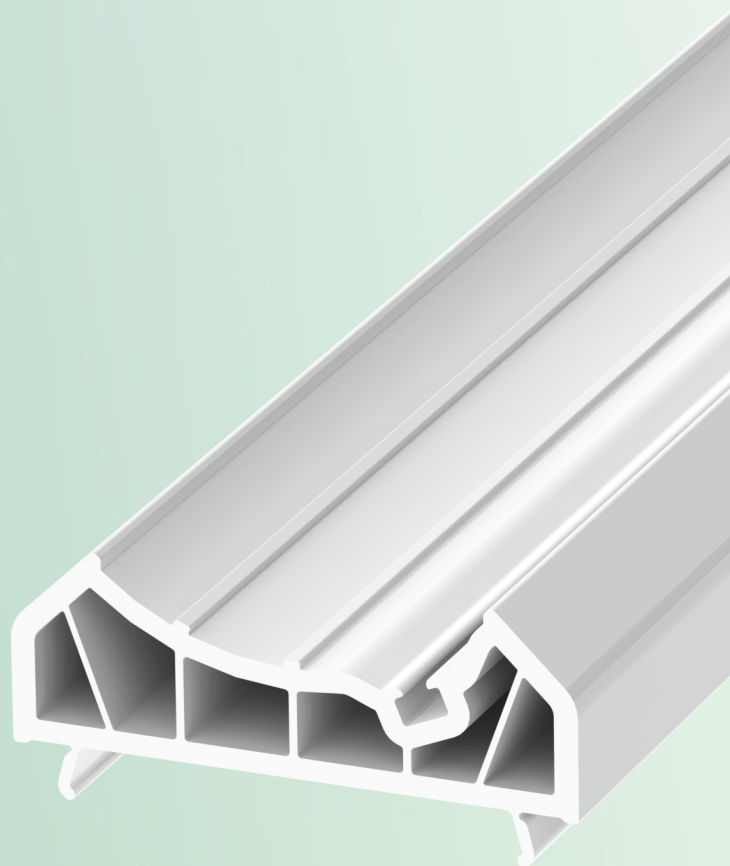
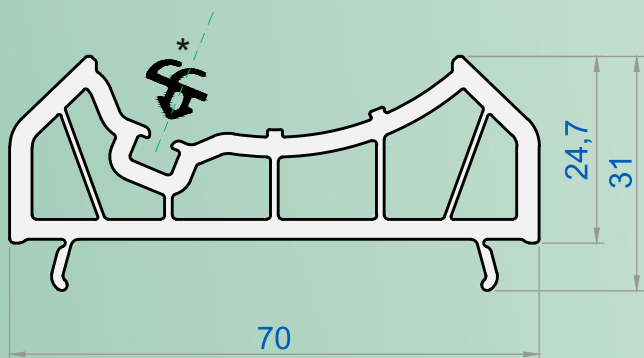
$I_x = 1,18 \text{ cm}^4$   
 $I_y = 1,82 \text{ cm}^4$

Cap.2.1 Profile

Profil adaptor teavă - **306-04**



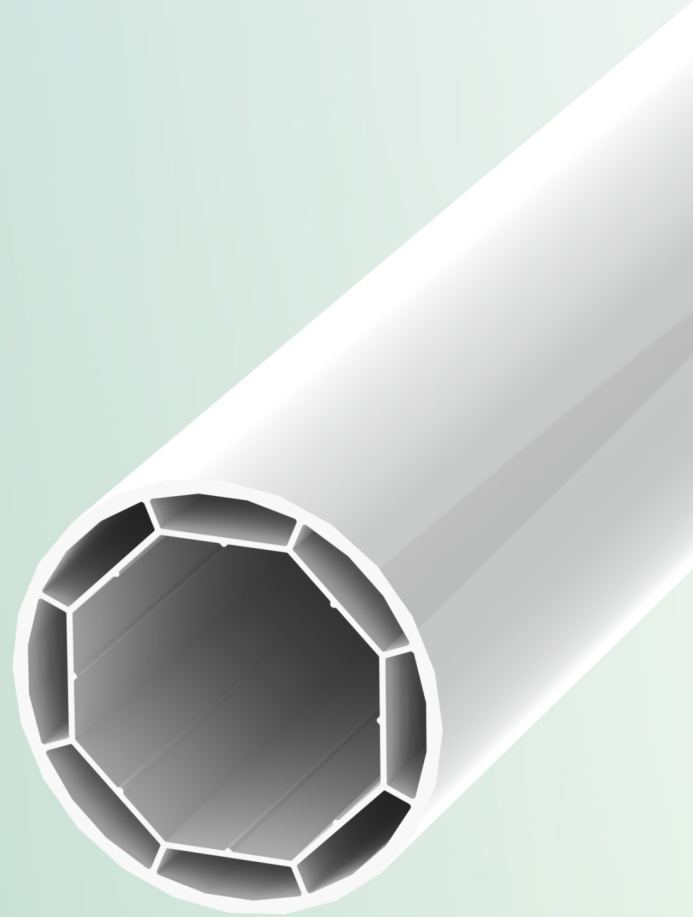
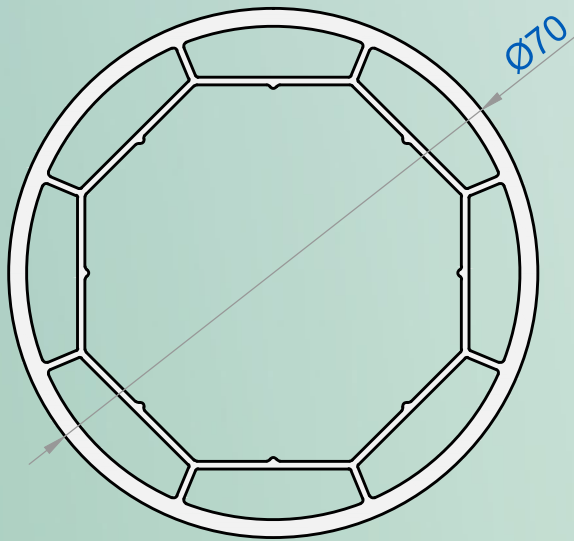
Profil adaptor teavă - **606-04**



\* Garnituri EPDM

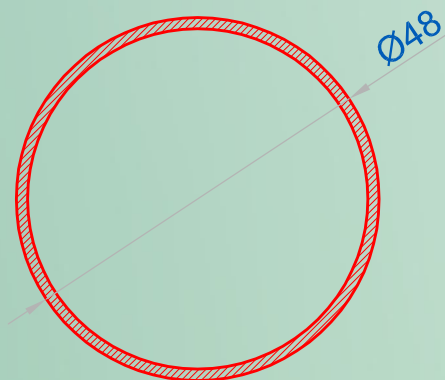
Cap.2.1 Profil

Profil teavă - **606-03**



Armături utilizate:

**209-10**



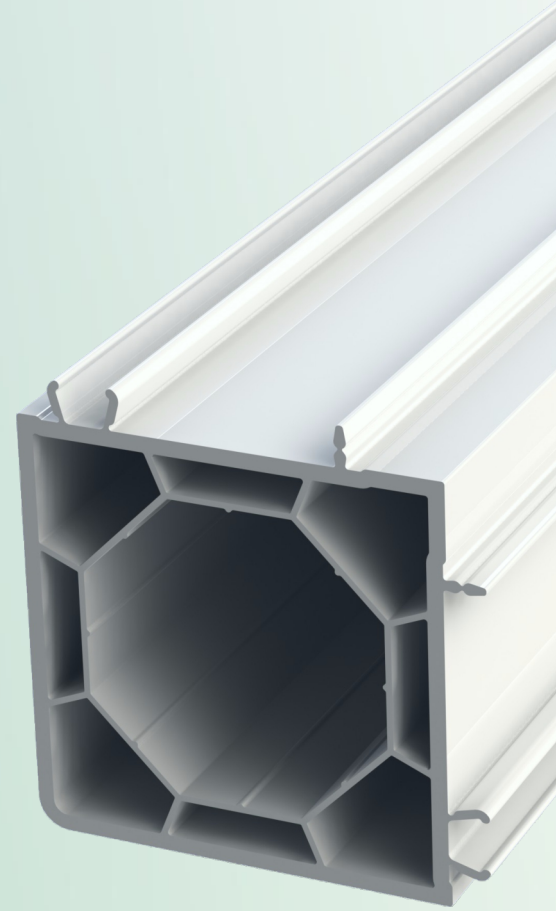
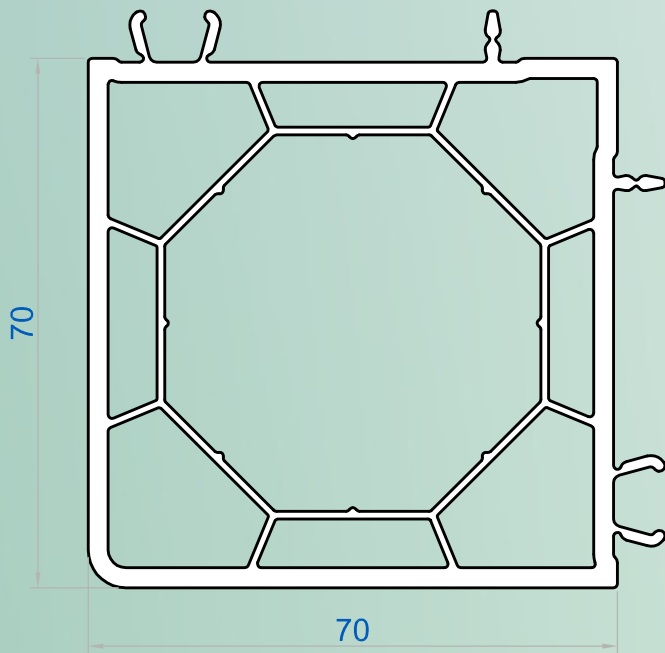
$$I_x = 5,93 \text{ cm}^4$$

$$I_y = 5,93 \text{ cm}^4$$



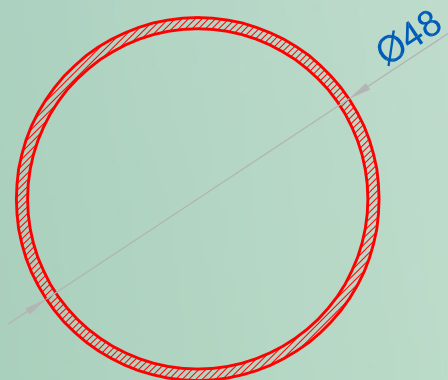
Cap.2.1 Profil

Profil cuplare 90° - **606-05**



Armături utilizate:

**209-10**

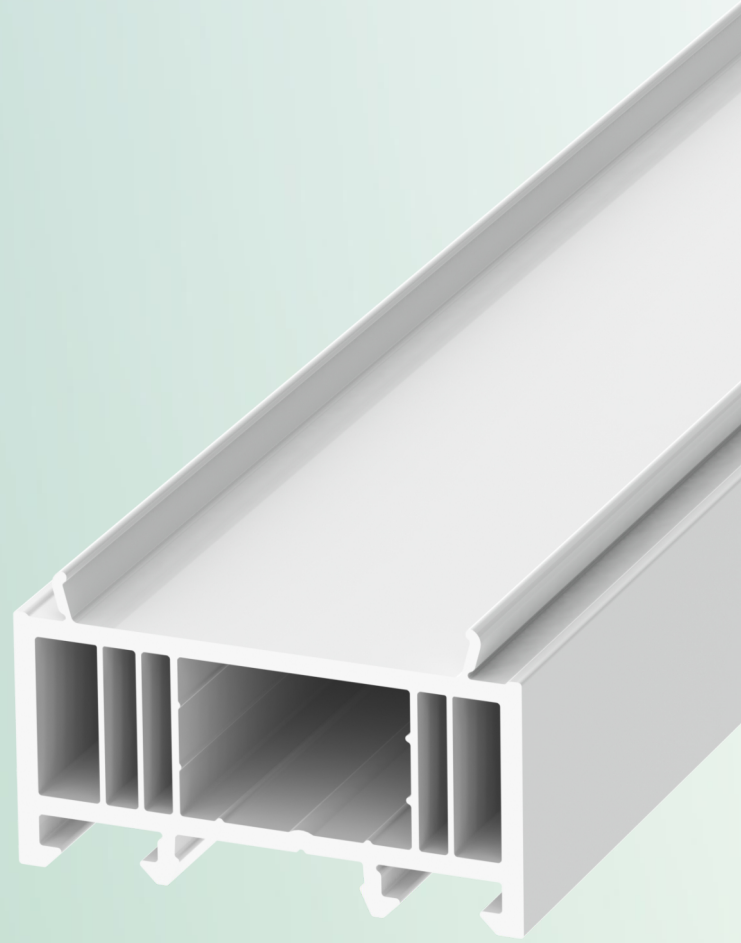
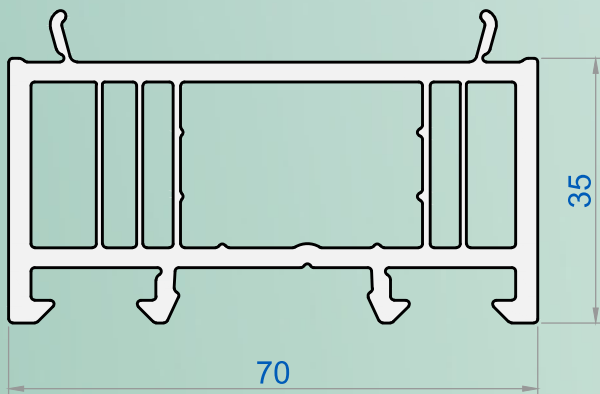


$$I_x = 5,93 \text{ cm}^4$$

$$I_y = 5,93 \text{ cm}^4$$

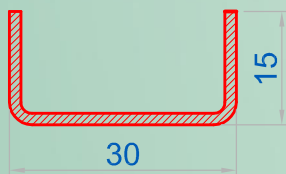
Cap.2.1 Profile

Profil adăugare ramă - **607-01**



Armături utilizate:

**109-02**

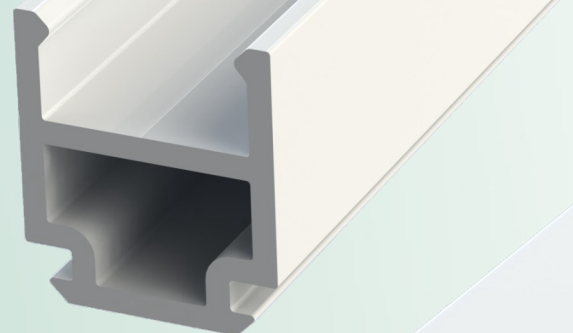
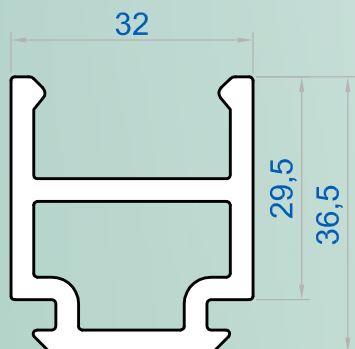


$$I_x = 0,17 \text{ cm}^4$$

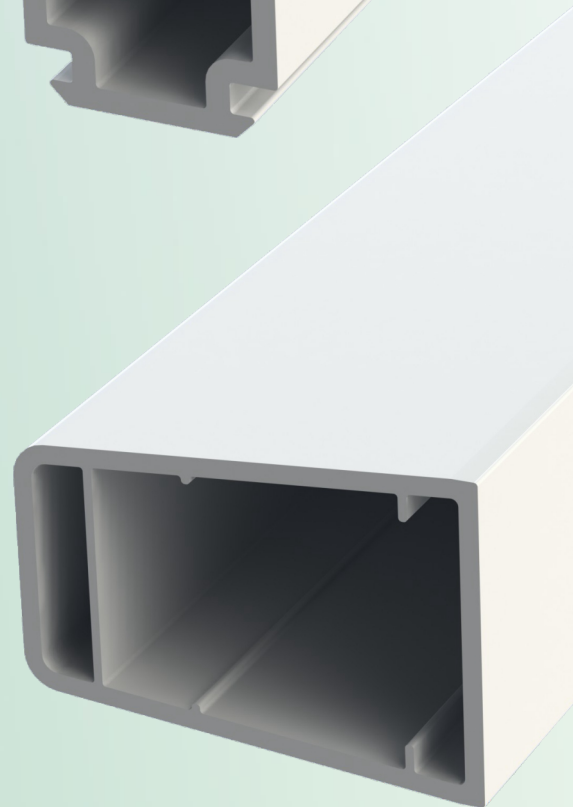
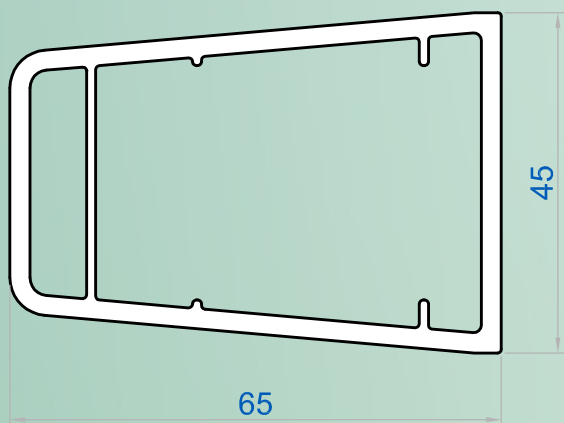
$$I_y = 1,09 \text{ cm}^4$$

Cap.2.1 Profile

Profil conector zid - **207-02**

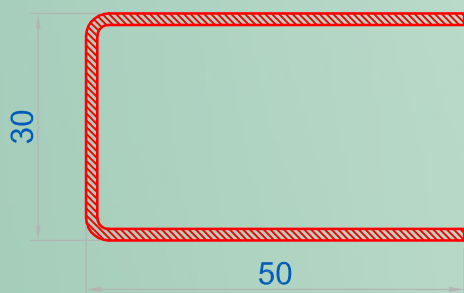


Profil rigidizor montant - **607-02**



Armături utilizate:

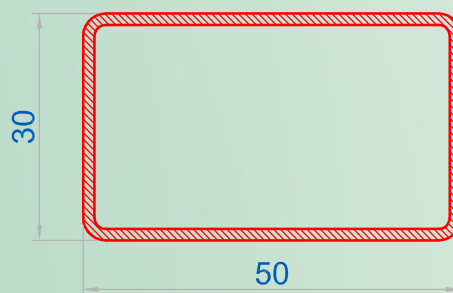
**309-04**



$$I_x = 3,23 \text{ cm}^4$$

$$I_y = 4,88 \text{ cm}^4$$

**309-05**

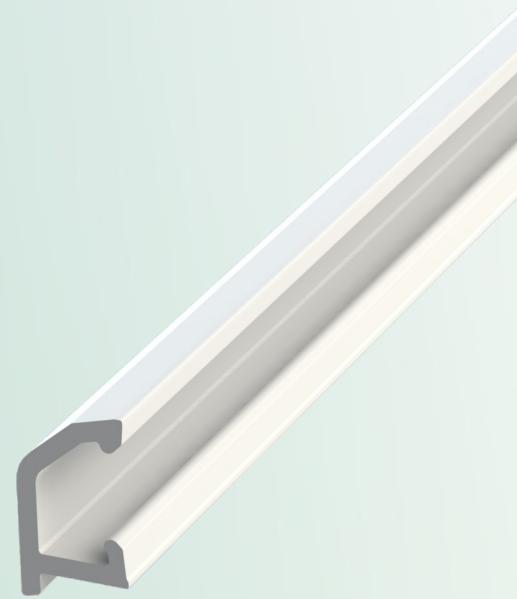
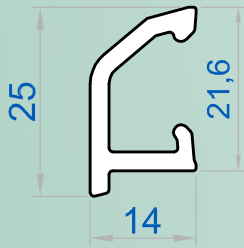


$$I_x = 3,41 \text{ cm}^4$$

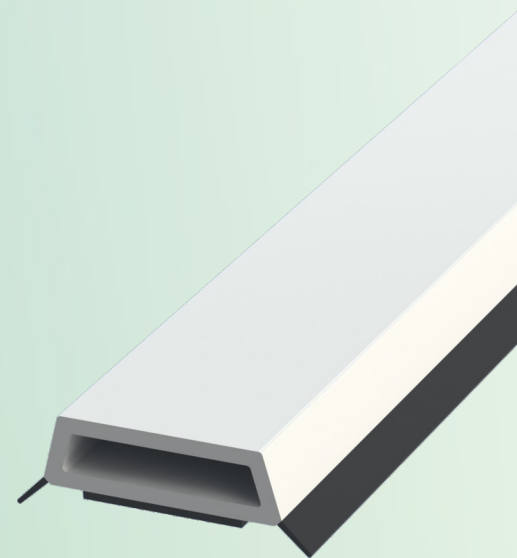
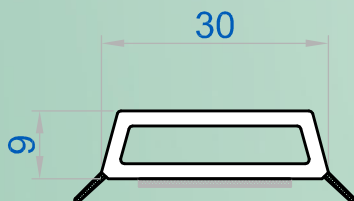
$$I_y = 7,44 \text{ cm}^4$$

Cap.2.1 Profile

Profil picurător - **607-03**

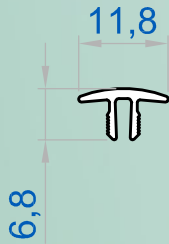


Profil baghetă ornamentală autoadezivă - **607-04**

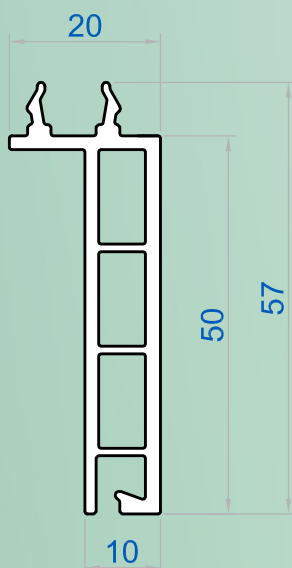


Cap.2.1 Profil

Profil capac - **607-05**



Profil pervaz - **607-06**



Cap.2.2 Accesorii

Garnitură geam EPDM - **310-01**



Garnitură geam EPDM - **310-03**



Garnitură cercevea EPDM - **310-02**



\* Garnitură geam termosudabilă TPE **310-10**

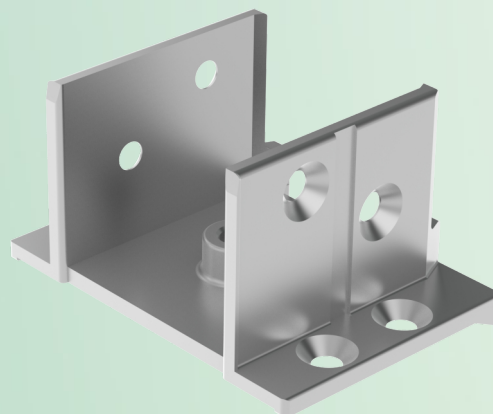


\* Garnitură cercevea termosudabilă TPE **310-20**



\* garnitură preinstalată pe profil

Conector montant - **S.71101**



Cap.2.2 Accesorii

Miez montant înclinat - **S.41102**



Set capace montant mobil - **S.71103**

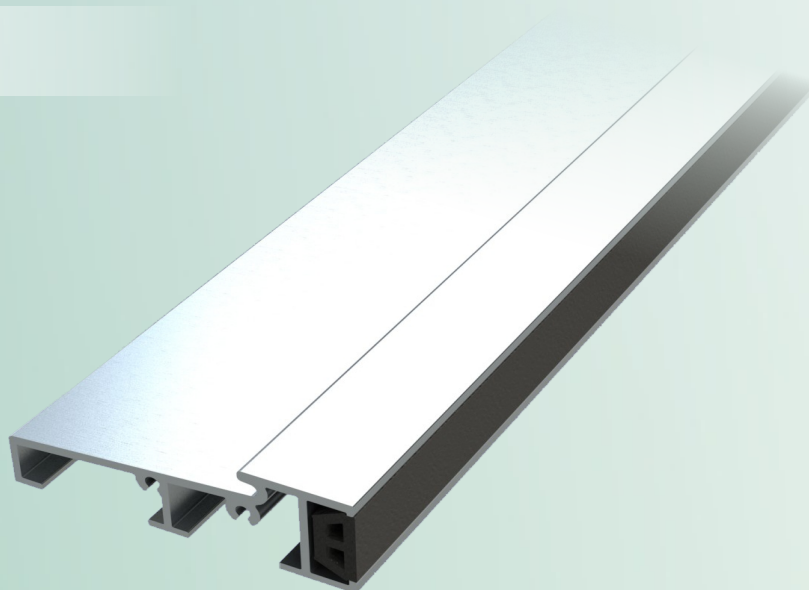


Garnitura cercevea usa-prag - **310-30**

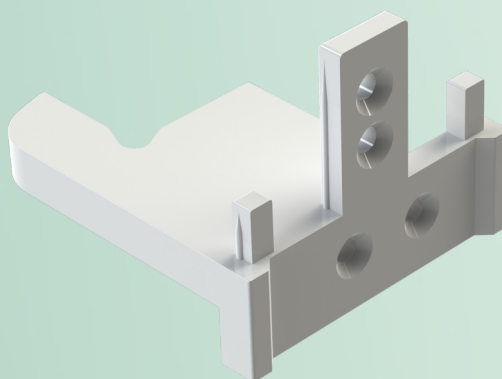


Cap.2.2 Accesorii

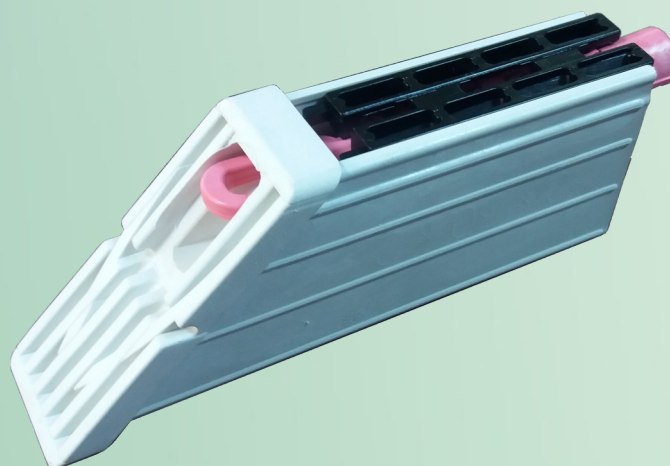
Prag aluminiu - **614-01**



Set capace prag - **S.71402**

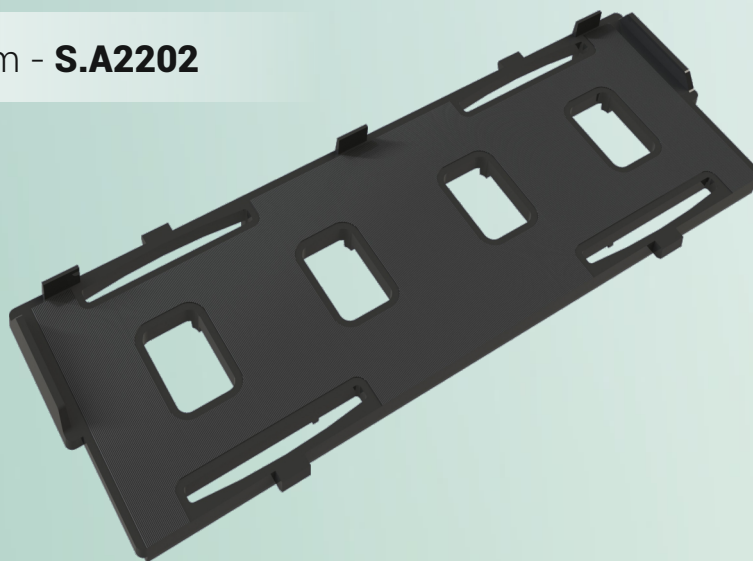


Set piese colt sudabile- **S.41104**





## Cap.2.2 Accesorii

Plăcută calare geam - **S.A2202**Plăcute distantier geam 1mm - **S.A1202**Plăcute distantier geam 2mm - **S.A1203**Plăcute distantier geam 3mm - **S.A1204**Plăcute distantier geam 4mm - **S.A1205**Plăcute distantier geam 5mm - **S.A1206**